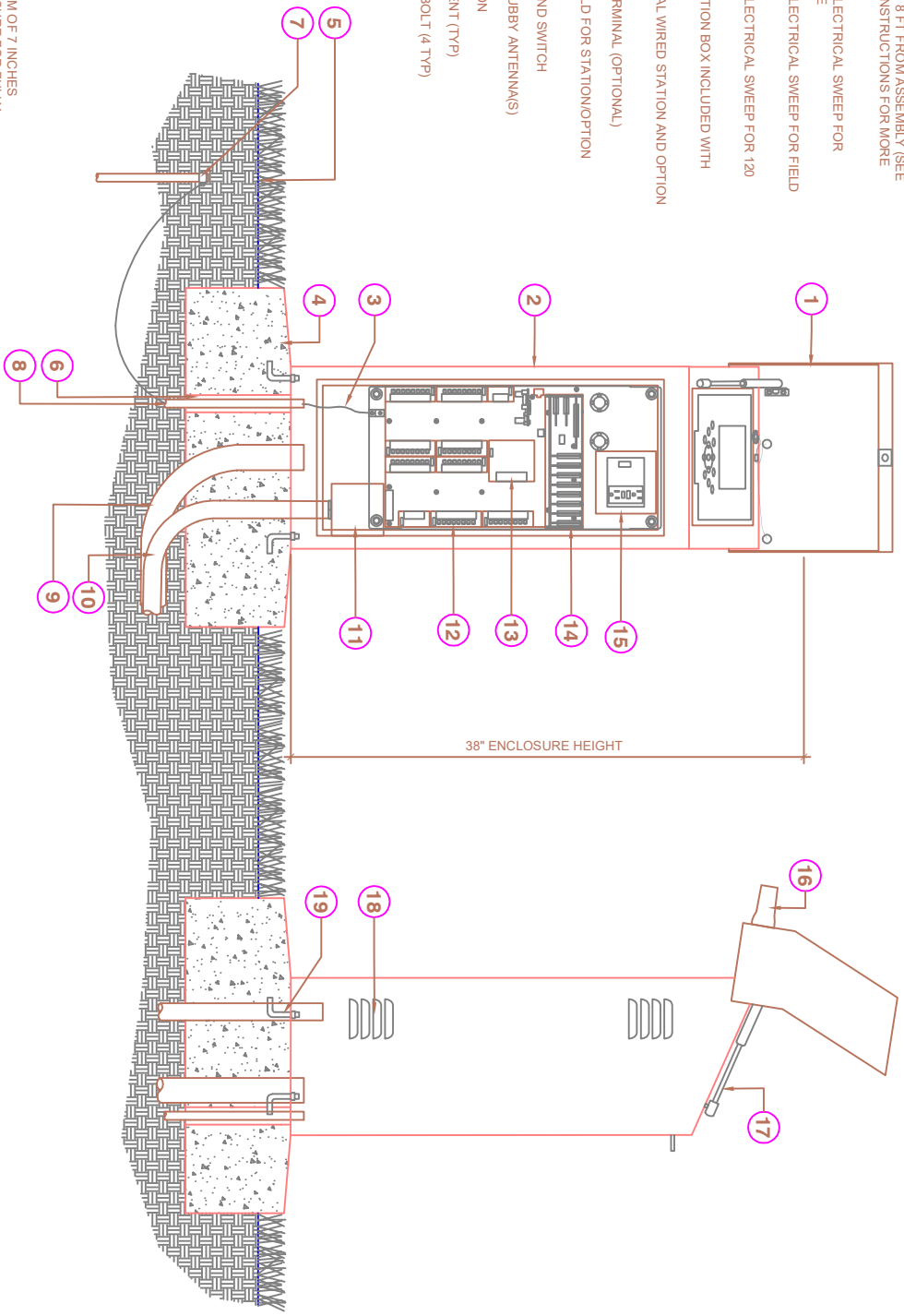


- ① FLIP LID IN OPEN POSITION
- ② CAUSENSE FACTORY ASSEMBLED STAINLESS STEEL ENCLOSURE FOR MODEL CS3000 CONTROLLER
- ③ #6 BARE COPPER GROUND WIRE
- ④ (24" x 26" x 8") CONCRETE BASE
- ⑤ FINISH GRADE 2" INCHES BELOW CONCRETE BASE (LAWN OR OTHER)
- ⑥ PVC SLEEVE FOR GROUND ROD
- ⑦ (5/8" x 8') COPPER GROUND ROD, INSTALL GROUND ROD 8 FT FROM ASSEMBLY (SEE GROUNDING INSTRUCTIONS FOR MORE DETAILS).
- ⑧ SCH 40 PVC ELECTRICAL SWEEP FOR GROUND WIRE
- ⑨ SCH 40 PVC ELECTRICAL SWEEP FOR FIELD WIRES
- ⑩ SCH 40 PVC ELECTRICAL SWEEP FOR 120 VAC POWER
- ⑪ 120 VAC JUNCTION BOX INCLUDED WITH ENCLOSURE
- ⑫ CONVENTIONAL WIRED STATION AND OPTION TERMINALS
- ⑬ TWO-WIRE TERMINAL (OPTIONAL)
- ⑭ PLASTIC SHIELD FOR STATION/OPTION CARDS
- ⑮ GF/OUTLET AND SWITCH
- ⑯ OPTIONAL STUBBY ANTENNA(S)
- ⑰ FLIP LID PISTON
- ⑱ LOUVERED VENT (TYP)
- ⑲ MOUNTING J-BOLT (4 TYP)



- NOTES:
- 1. ALLOW MINIMUM OF 7 INCHES BEHIND ENCLOSURE FOR FULLY OPENED LID
  - 2. 120 VAC POWER AND GROUNDING PER NATIONAL AND LOCAL ELECTRICAL CODES