

RRe –INTERFACE



USERS GUIDE

Important:


For use with IR-Interface Software & ACT-IR220L plus IR-Interface in conjunction with the Handheld RRe-Tran Radio Remote device.



 **TABLE OF CONTENTS**

 **SECTION 1: RRe-INTERFACE**


1A. RRe-INTERFACE

 **SECTION 2: PREFERENCES**

2A. COMMUNICATIONS TAB
2B. DATABASE TAB

 **SECTION 3: REGIONS**

3A. NEW REGION
3B. DELETE REGION
3C. SEND SELECTION TO RRe
3D. ACQUIRE REGIONS
3E. VIEW/HIDE CONTROLLER LIST

 **SECTION 4: CONTROLLERS**

4A. NEW CONTROLLER

4A.1 COMMUNICATIONS TAB
4A.2 NOTES TAB
4A.3 ADVANCED TAB
4A.4 STATION DESCRIPTION TAB

4B. EDIT CONTROLLER
4C. DELETE CONTROLLER

 **SECTION 5: HELP**

5A. HELP

Important Message

DO NOT Install IR-Interface software if you are already using Command Center. This software is intended for use without the Command Center software present.

Important Message

Make sure that the IR-Interface software and IR-Interface device are properly installed prior to following any of the directions in the guide.

SECTION 1: RRe INTERFACE

1A. RRe-Interface

The RRe Interface is used for uploading and downloading controller information from:

IR-Interface to Handheld (RRe-TRAN):

Region / Controller information is created, edited, or deleted and sent to the Handheld unit via IR-Interface software program.

Handheld (RRe-TRAN) to IR-Interface:

Controller information is obtained first hand from the controller via the Handheld (RRe-Tran) and retrieved by IR-Interface software program.

Once the IR-Interface software has been loaded onto your computer, Look for the RRe-Interface icon on your desktop and click on it to open (Figure 1.1).



Figure 1.1

Note: This will bring up the **Calsense RRe** window (Figure 1.2).

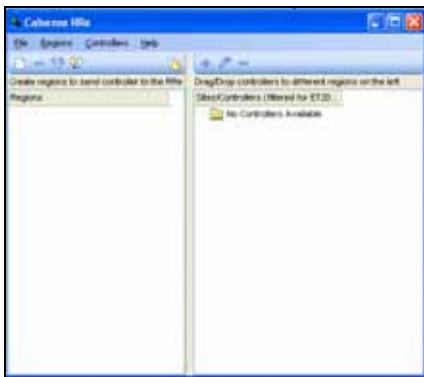


Figure 1.2

SECTION 2: PREFERENCES

The preferences section of the RRe-Interface is used for identifying the communications port, and entering the proper Client /Server settings.

2A. Communications Tab

In the toolbar at the top of the **Calsense RRe** window select **File** and then scroll down to **Preferences** and click on it (Figure 2.1).

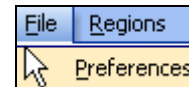


Figure 2.1

1. In the Communications tab use the drop down arrow to **Select serial port for IR link to Handheld** (Figure 2.2).



Figure 2.2

Note: This setting is to identify the Communications port that you have the IR-Interface Unit (RRe-IR) physically plugged into.

2. Click the **OK** button once the selection has been made (Figure 2.3).

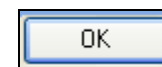


Figure 2.3

Note: Click the **Cancel** button if you want to exit this screen without saving any changes.



2B. Database Tab

This section of the IR-Interface allows multiple users on different computers to access the same database stored at a shared location.

1. In the toolbar in the IR-Interface window select **File** and scroll down to **Databases** and click on it (Figure 2.4).



Figure 2.4

Database Connection Type:

- **LOCAL:** The Local environment is used when the databases and the communications module are located with IR-Interface software on the same computer.
- **REMOTE:** The Remote environment is when the databases are stored at a shared location. Selecting **REMOTE** requires the purchase of Advantage Database Server software which is protected by copyright laws and is not to be installed without prior approval from Calsense. The setup of the server software requires the assistance of the customers IT department.

Note: If you are running in Client Server mode and unable to run in the **REMOTE** setting contact Calsense for assistance

Database Location: Click on the **browser** button. This will take you to the “**Browser for Folder**” screen. This allows you to identify where your database is located (Figure 2.5).

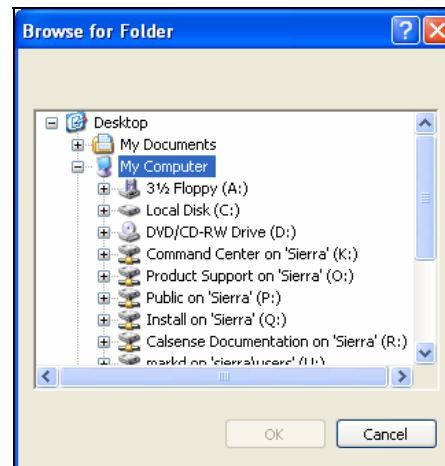


Figure 2.5

2. Once located click on the **OK** button.

Note: If you do not want to select a location click on the **Cancel** button to exit out of this screen.

SECTION 3: REGIONS

The Regions section of the IR-Interface allows the user to do the following:

- Add new region
- Delete Region
- Send selection to RRe-TRAN
- Acquire regions
- View / hide controller list

3A. New Region

This section allows the user to create new regions, assign existing sites and individual controllers to newly created regions, or pre-existing regions.

3. In the toolbar of the IR-Interface window select **Regions** and scroll down to **New Region** and click on it (Figure 3.1).

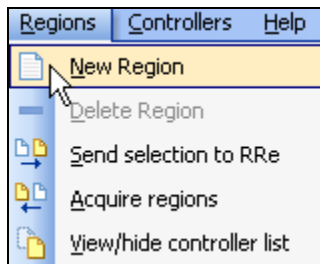


Figure 3.1

The **New Region** screen will be displayed (Figure 3.2)

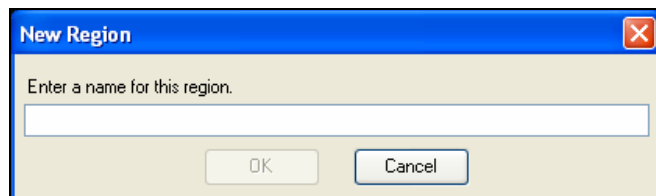


Figure 3.2

4. Type the name that you have chosen for the Region in the box provided (Figure 3.3).

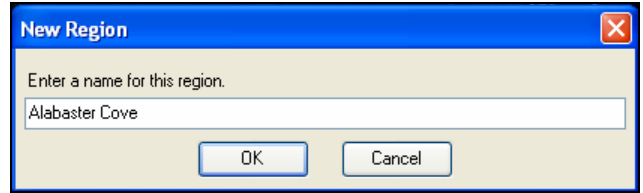


Figure 3.3

5. To save the entry click on the **OK** button (Figure 3.4).

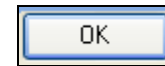


Figure 3.4

Note: Click on the **Cancel** button to exit this screen without saving any changes.

Assign a Site / Controller to the Region:

When a user has existing sites with ET2000e controllers assigned to them, they will appear in the Sites/Controllers portion of the screen (Figure 3.5).

Note: If no controllers exist in the Sites/Controllers window see Section 3D Acquire Regions portion of this manual.

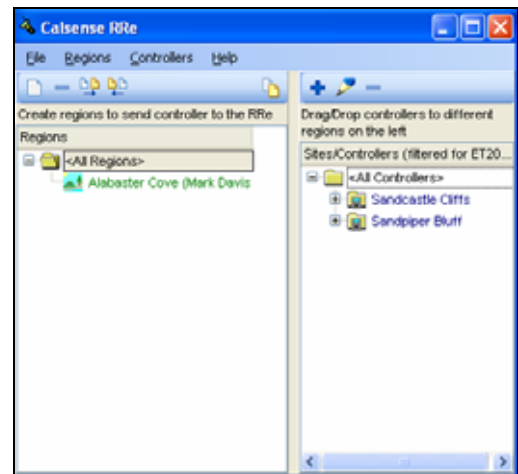


Figure 3.5

6. Highlight the site or controller that you want to assign to a region (Figure 3.6).



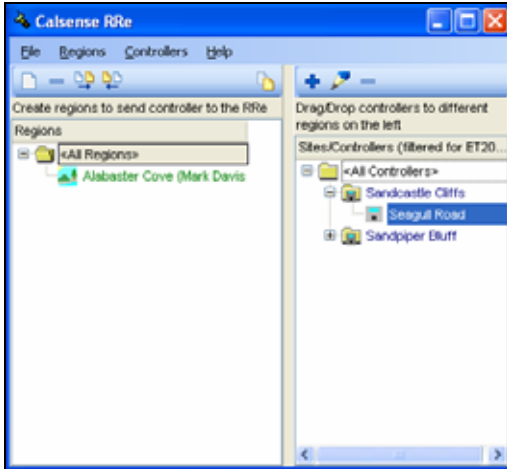


Figure 3.6

- Click on the Site/Controller and hold down the left mouse button. Drag the Site/Controller over to the desired region. Release the mouse button (Figure 3.7).

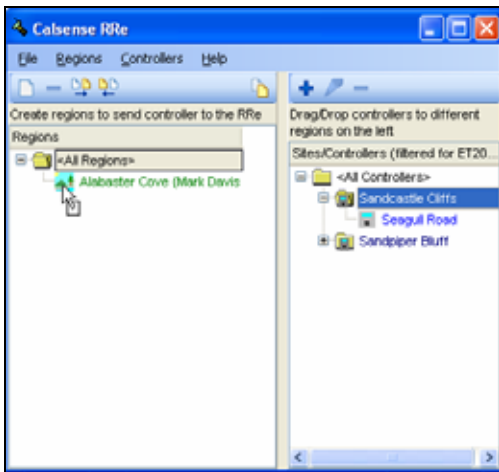


Figure 3.7

The Site/Controller will appear under the region chosen and is displayed in figure 3.8

Note: In figure 3.8 the region “Alabaster Cove” now has one site assigned “Sandcastle Cliffs” with one controller in the site named “Seagull Road”.

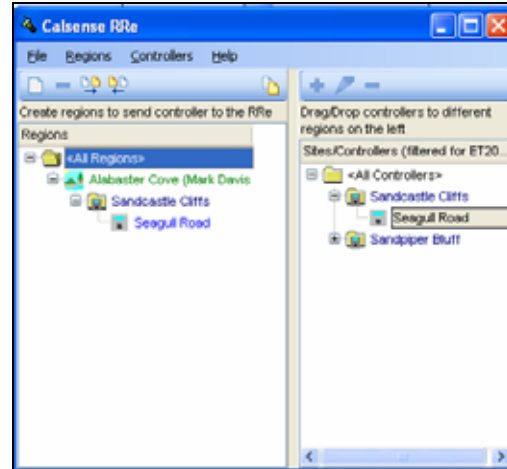


Figure 3.8

3B. Delete Region

This section allows the user to delete existing regions and all of the controllers assigned to them.

- In the toolbar of the IR-Interface window select **Regions** and scroll down to **Delete Region** and click on it (Figure 3.9).

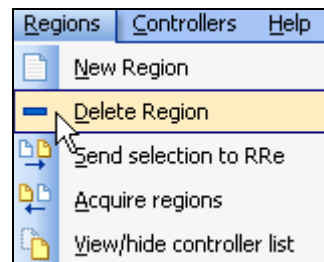


Figure 3.9

The **Confirm** screen will be displayed (Figure 3.10).

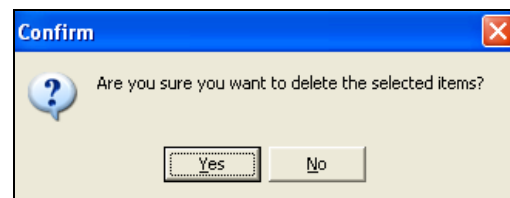


Figure 3.10

- Click on the **Yes** button to delete the selected region and **all** of the controllers assigned to that region.

Note: Click on the **No** button to exit this screen without saving any changes.

Deleting a Site:

- Click on the “+” symbol to the left of the region that your site resides in.
- Highlight the site that you want to delete.

Note: You can select multiple sites within a region or in more than one region by holding down the **Ctrl** button on your keyboard and clicking on each individual site to highlight them.

- In the toolbar of the IR-Interface window select **Regions** and scroll down to **Delete Region** and click on it. (Figure 33.2.10).
- The **Confirm** screen will be displayed (Figure 33.2.11).
- Click on the **Yes** button to delete the selected sites and **all** of the controllers assigned to the site(s).

Note: Click on the **No** button to exit this screen without saving any changes.

Deleting controllers:

- Click on the “+” symbol to the left of the region that your controller resides in.
- Click on the “+” symbol to the left of the site that your controller resides in.
- Highlight the controller that you want to delete.

Note: You can select multiple controllers within a region / site, or in more than one region or site by holding down the **Ctrl** button on your keyboard and clicking on each individual controller to highlight them.

- In the toolbar of the IR-Interface window select **Regions** and scroll down to **Delete Region** and click on it. (Figure 33.2.10).

- The **Confirm** screen will be displayed (Figure 33.2.11).
- Click on the **Yes** button to delete the selected controller(s).

Note: Click on the **No** button to exit this screen without saving any changes.

3C. Send Selection To RRe

This section allows the user to send new regions, sites, and controllers to the RRe-TRAN handheld unit.

- Highlight the region, site, or controller in the **Regions** list that you want to send to the RRe-TRAN Handheld unit (Figure 3.11).

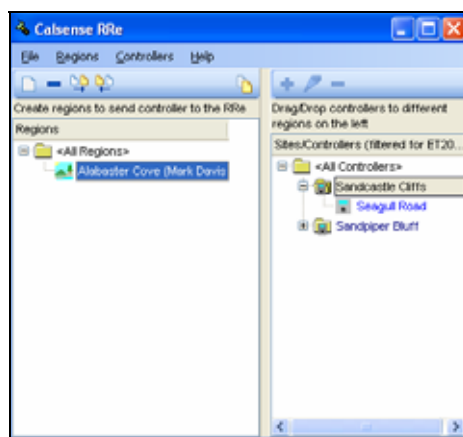


Figure 3.11

- In the toolbar of the IR-Interface window select **Regions** and scroll down to **Send selection to RRe** and click on it (Figure 3.12).

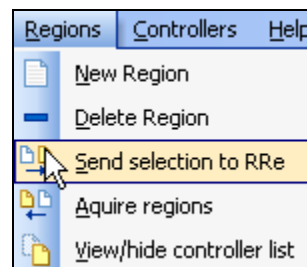


Figure 3.12



The **IR Link alignment** screen is displayed (Figure 3.13)



Figure 3.13

Note: Make sure that the IR-Link and the RRe-Tran are aligned correctly.

3. Press the **OK** button.

The **Status** screen is displayed (Figure 3.14).

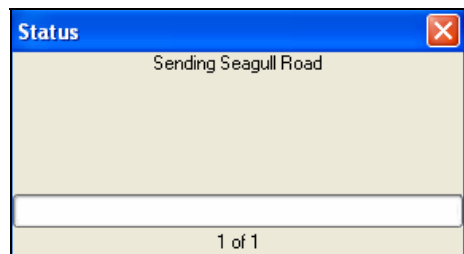


Figure 3.14

Once the communication has taken place the RRe Interface screen is displayed Figure 3.15)

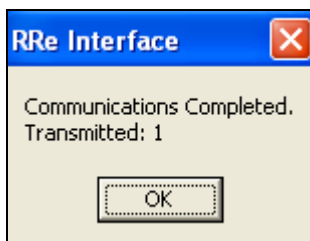


Figure 3.15

4. Press the **OK** button.

3D. Acquire Regions

1. In the toolbar in the IR-Interface window select **Regions** and scroll down to **Acquire regions** and click on it (Figure 3.16).

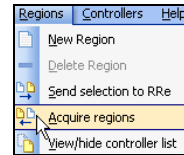


Figure 3.16

The **IR Link alignment** screen is displayed (Figure 3.17)



Figure 3.17

Note: Make sure that the IR-Link and the RRe-Tran are aligned correctly.

2. Press the **OK** button.

The **Status** screen is displayed (Figure 3.18).

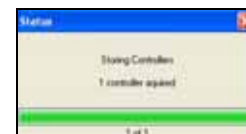


Figure 3.18

Once the communication has taken place the RRe Interface screen is displayed Figure 3.19).



Figure 3.19

3. Press the **OK** button.

Note: Any controller that was acquired via the Handheld radio Remote (RRe-TRAN) will show up as a serial number for the name. If you want to change the name of a controller, site, or region you will have to highlight it and type in the new name. Then send this new information back to the Handheld Radio Remote (RRe-TRAN).

3E. View/Hide Controller List

This section of the IR-Interface allows the user to hide the controller list portion of the screen once controllers have been assigned to the various regions and is no longer necessary to look at.

2. In the toolbar of the IR-Interface window select **Regions** and scroll down to **View/hide controller list** and click on it (Figure 3.20).

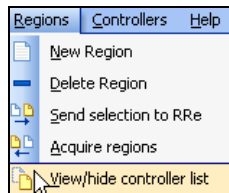


Figure 3.20

This will remove the controller list from view in the IR-Interface window (Figure 3.21).

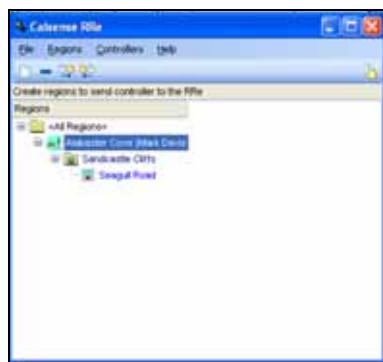


Figure 3.21

Note: To unhide the controller list. In the toolbar of the IR-Interface window select **Regions** and scroll down to **View/hide controller list** and click on it (Figure 3.20).

SECTION 4: CONTROLLERS

4A. New Controller

This section allows the user to enter a new controller into the existing controller list in Command Center via the IR-Interface window.

4. In the toolbar of the IR-Interface window select **Controllers** and scroll down to **New Controller** and click on it (Figure 4.1).



Figure 4.1

The **Controller Information** screen is displayed (Figure 4.2).

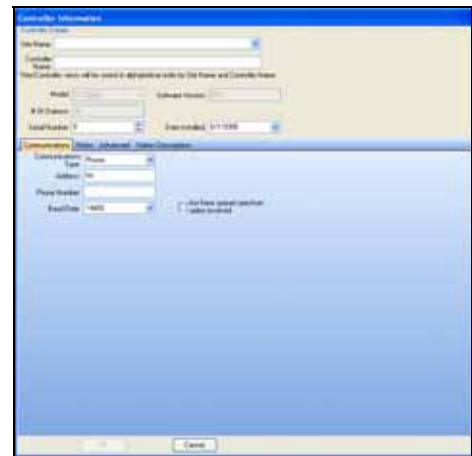


Figure 4.2

Site Name: Site names are used to group a number of controllers together.

- Type a name in the site name box or select the down arrow and choose a name that has already been entered. (Example: Memorial Park).

Controller Name: Controller names are used to identify individual controllers in a site. (Example: Snack bar).

Model: This box shows the model type of the controller. This section is greyed out and will change automatically when the controller is contacted for the first time.

Software Version: This is the current ROM version of the controller. This section is greyed out and will change automatically when the controller is contacted for the first time.

of Stations: This is the number of stations the controller is equipped with. This section is greyed out and will change automatically when the controller is contacted for the first time.

Serial Number: This is the individual serial number for the controller. It must be entered prior to using the IR-Interface to communicate with the controller. If not known this number can be retrieved by using speed communications to communicate, and number will update automatically.

Date Installed: Use this box to fill in the date that the controller was originally installed.

4A.1 Communications Tab

Communications Type:

- **Phone:** (-M,-R,-MR) Used for phone or hard wire communications.
- **Local Radio:** (-ML,-LR,-MLR) Used for Local Radio.
- **Digital Radio (AT):** (-MD,-DR,-MDR) Used for digital radio using AT protocol.
- **Digital (MASC):** (-MD,-DR, -MDR) Used for digital radio using MASC protocol.
- **MDS:** Microwave Data System.
- **CDPD:** Cellular Digital Packet Data.
- **Ethernet:** (-ME,-EN,-MEN) Ethernet Network.
- **Spread Spectrum:** (-SR,-MSR,-MS) Spread Spectrum Radio.
- **GPRS:** (-MG,-GR,-MGR) General Packet Radio Service.

- **Fiber Optic Modem:** Fiber Optic Communications.

Contact Calsense at 1-(800)-572-8608 if you are unable to determine the controller's communication type.

Note: Next you will have to enter a communications address in the "Address" block.

2. Click on the "**Address:**" box and enter a three letter / number or symbol combination (Figure 4.3).

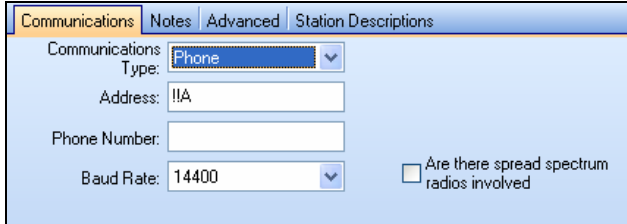


Figure 4.3

Address: The address is used to identify a particular controller's communication address. Controllers using communications options -LR, -SR, -ME, -MG, -MDR, -MLR, -MSR, -FOM, -MR or -M make it necessary to set a different communication address for each controller that is physically hard wired together sharing a single phone number, MAN number or radio.

It is not necessary to change the address if the communications option for the controller is a -DR, -EN, -GR, -R, or a stand alone controller using a Calsense direct wire cable communicating through the front serial port of the controller.

Note: The controller's communications address shipped from the factory is !!A. The controller's address can only be changed at the controller. The address listed here, in the central software, **must** match the address in the controller. If the addresses do not match the central **will not** communicate with the controller.

Note: ET2000 (500 series) and ET2000e controllers are shipped from the factory with a communications address of !!A.

TCP/IP Address / ID / IP / MAN Number or Phone Number: Depending on which communication type has been selected. One of the following will appear.

- TCP/IP Address: (CDPD) Cellular Digital Packet Data.
- ID Number: (GPRS) General Packet Radio Service.
- IP: Ethernet.
- Man Number: (AT & MASC) Digital Radio.
- Phone Number:
 - Phone
 - MDS
 - Local Radio or Spread Spectrum
 - Fiber Optic Modem

3. Select the TCP/IP, ID, and IP, MAN or Phone number box and enter the appropriate number.

Note: If hard wire communications is being used, no number is entered.

Baud Rate: This is the rate at which the controller transfers data when communicating.

Are there Spread Spectrum radios involved: If there is an Spread Spectrum radio involved in a chain of controllers, each controller in the chain must have this box checked.

4A.2 Notes Tab

1. By clicking on the “Notes” tab you will open up an area where you can enter additional information about the controller (Figure 4.4).

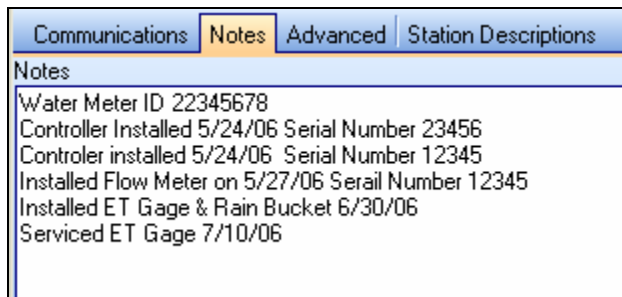


Figure 4.4

4A.3 Advance Tab

1. BY clicking on the “Advanced” tab you can change the following information:

- Use CTS (Clear to send) / RTS (Request to send) when hard wired.
- Time out adjustment percentage.

The **Advance Tab** screen is displayed (Figure 4.5).

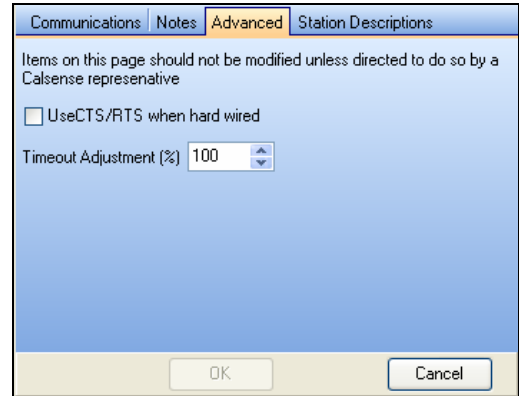


Figure 4.5

CAUTION:

Items on the Advance tab should not be modified unless directed to do so by a Calsense representative.

Note: If you choose not to save any of the information for this controller click on the **Cancel** button at the bottom of the screen.

2. Click on the **OK** button to exit this window.



4A.4 Station Description Tab

1. By clicking on the “**Station Description**” tab you will open up an area where you can enter Station specific information (Figure 4.6).

Station Number	Station In Use	Station Description (Only the first 16 characters will be displayed in the handheld)
1	<input checked="" type="checkbox"/>	East Parking lot shrubs
2	<input checked="" type="checkbox"/>	Childrens Play area south of building
3	<input type="checkbox"/>	
4	<input type="checkbox"/>	
5	<input checked="" type="checkbox"/>	Soccer Field 1
6	<input checked="" type="checkbox"/>	Baseball Diamond 3A
7	<input type="checkbox"/>	
8	<input checked="" type="checkbox"/>	Nature walk / Dog Park

Figure 4.6

Station Number: This column lists the stations in this controller in order from lowest to highest and is non-adjustable.

Stations In Use: This column allows the user to turn off non-required station outputs. These stations will no longer be visible for programming in any of the RRe-TRAN screens.

Station Description: This column allows the user to name individual stations (Only 16 characters will be displayed in the handheld) up to 40 characters can be used.

2. To save the entry click on the **OK** button (Figure 4.7).

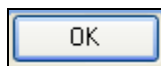


Figure 4.7

Note: Click on the **Cancel** button to exit this screen without saving any changes.

4B. Edit Controller

1. From the “**Sites/Controller**” list highlight the site that you want to edit (Figure 4.8).

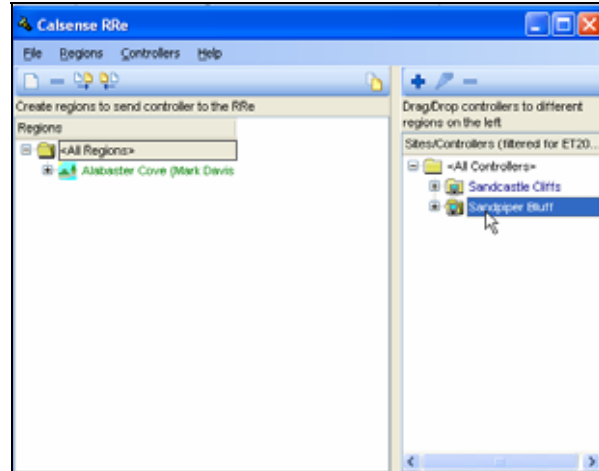


Figure 4.8

2. Click on the “+” sign to the left of the site name to reveal the controllers list assigned to this site (Figure 4.9).

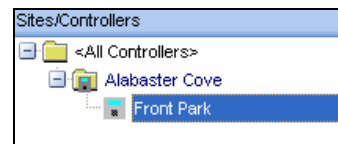


Figure 4.9

3. Highlight the controller from the list that you want to edit.
4. In the toolbar in the IR-Interface window select **Controllers** and scroll down to **Edit Controller** and click on it (Figure 4.10).



Figure 4.10

Note: Clicking this button will allow you to edit the existing data for this specific controller. Use the directions in Section 4A “New Controller” of this manual to go step by step through the effected fields.

- Once you have edited the information click on the **OK** button to save any changes that were made (Figure 4.11).

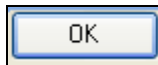


Figure 4.11

Note: If you do not want to save the edited data click on the **Cancel** button. This will not alter any information that you currently have in the database.

4C. Delete Controller

- From the “**Sites/Controller**” list highlight the Site/Controller that you want to delete (Figure 4.12).

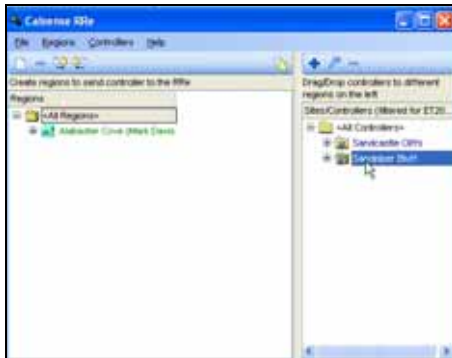


Figure 4.12

- In the toolbar in the IR-Interface window select **Controllers** and scroll down to **Delete Controller** and click on it (Figure 4.10).



Figure 4.10

The **Confirm** screen is displayed (Figure 4.11).

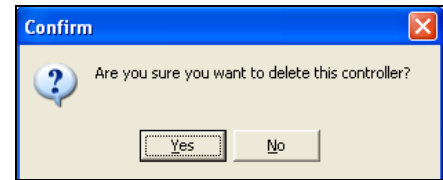


Figure 4.11

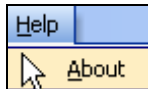
- Click on the **Yes** button to delete the Site/ Controller.

Note: Click on the **No** button to close out of this window without saving any changes.

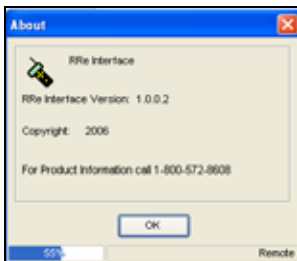
SECTION 5: HELP **5A. HELP**

This section of the RRe-Interface program allows the user to identify what version of RRe-Interface software they are currently running.

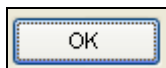
1. In the toolbar at the top of the screen select **Help** scroll down to **About** and click on it (Figure 5.1).

**Figure 5.1**

The **About** screen is displayed (Figure 5.2).

**Figure 5.2**

2. Press the **OK** button to exit this screen (Figure 5.3).

**Figure 5.3**

2075 Corte del Nogal, Suite P, Carlsbad CA 92011
1-(800)-572-8608 FAX: 1-(760)-438-2619
www.calsense.com