

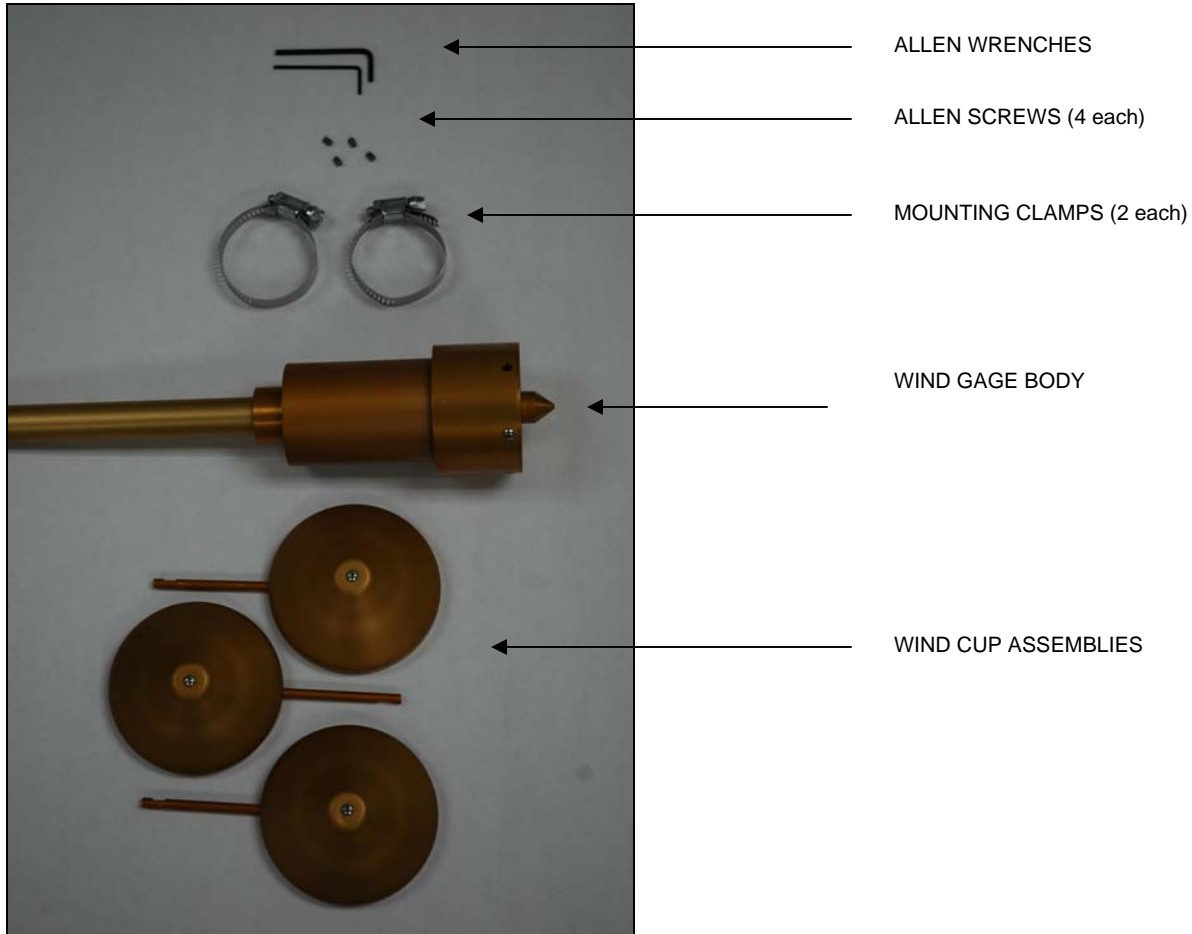
WIND GAGE



TROUBLESHOOTING



WIND GAGE PARTS IDENTIFICATION



WIND GAGE ASSEMBLY

 **WIND GAGE TROUBLESHOOTING**

The *Calsense* Wind Gage requires periodic servicing. This section deals with troubleshooting only. If your Rain Bucket requires servicing refer to the Servicing section of the Manual.

REQUIRED TOOLS

- Digital Multi-meter.
- Common Screwdriver (small)
- Philips Screwdriver
- Wire Strippers
- 3 wire connectors
- 10" 14 AWG jumper wire

PROBLEM : ZERO MILES PER HOUR

The following steps will help you troubleshoot a reading of zero miles per hour on the controller screen for the wind gage when actual wind speed is known to be more than zero.



**ZERO MPH
STEP 1**

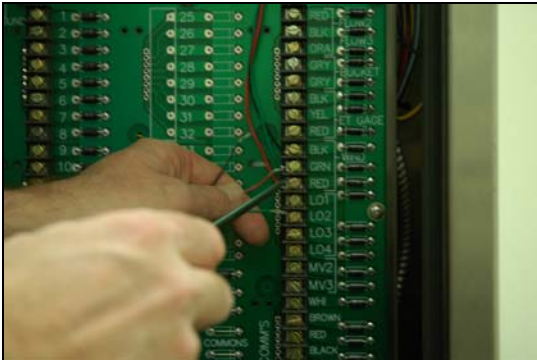
Spin Gage while you have someone at the controller watching the screen for a change in the MPH reading. If no reading, proceed to the controller.



**ZERO MPH
STEP 2**

NO TP-1 BOARD

At the controller disconnect the field wiring from the options harness.

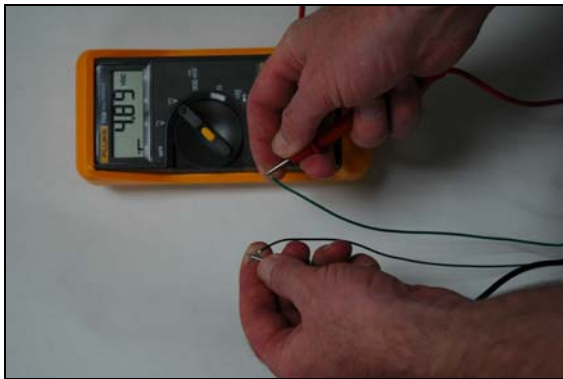


**ZERO MPH
STEP 3**

NO TP-1 BOARD

Test the controller wire harness for voltage. BLACK lead to WHITE wire, RED lead to ORANGE wire. You should read 5.0 volts DC.





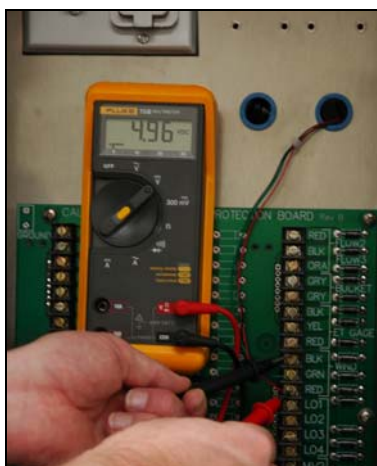
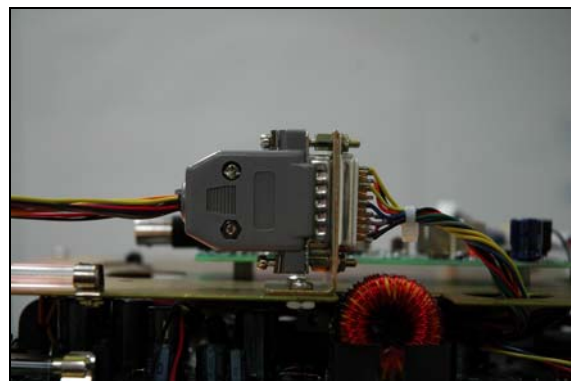
**ZERO MPH
STEP 4**

NO TP-1 BOARD

Test the controller wire harness for voltage. BLACK lead to WHITE wire, RED lead to GREEN wire. You should read 5.0 volts DC.

**ZERO MPH
STEP 5**

If no voltage is present make sure that the wire harness is securely connected to the controller connector. Test for voltage again. If no voltage is present contact Calsense at 1-(800)-572-8608

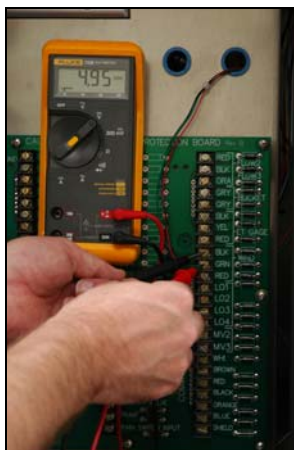


**ZERO MPH
STEP 6**

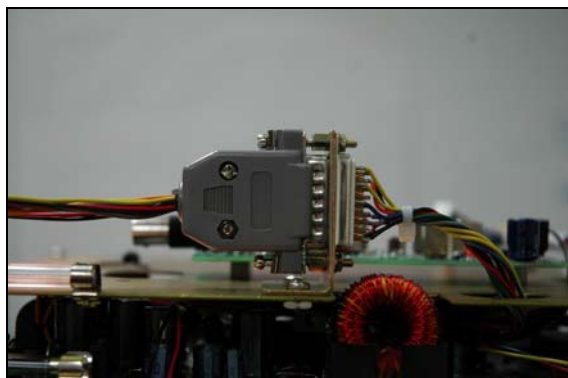
IF using a TP-1 board, test the terminal posts for voltage. BLACK lead to BLACK wire terminal. RED lead to RED wire terminal. You should see 5.0 volts DC.

**ZERO MPH
STEP 7**

Test the BLACK lead to the BLACK wire terminal, and the RED lead to the GREEN wire terminal. You should see 5.0 volts DC.



**ZERO MPH
STEP 8**



If no voltage is present check the wiring harness on the back of the controller for security. If connected properly and no voltage is present contact Calsense at 1-(800)-572-8608.

This concludes Wind Gage troubleshooting



**2075 Corte del Nogal, Suite P, Carlsbad CA 92011
1-(800)-572-8608 FAX: 1-(760)-438-2619
www.calsense.com**

Stock Number: PG1-WG-E

Rev. 03/07

