

# CS3-GR

cellular communication option

The Calsense Cellular Communication Option, model CS3-GR, is an embedded industrial-grade 4G LTE wireless solution offering the latest LTE performance, time-sensitive event tracking and cloud connectivity. Flexible and robust, the CS3-GR option is an intelligent gateway which automatically detects if the connection to the cloud is lost and reestablishes its connection. Designed for the harshest of environments, this device ensures you can remotely manage your controllers nearly anywhere within the United States.

- Delivers reliable, long distance data communication via the internet
- Doesn't require any trenching or wires

## Specifications

### Antennas

An antenna (purchased separately) is required to use the CS3-GR.

- [Calsense Stubby Antenna](#) (model GR-STUBBY), is a 3-dBi omnidirectional surface mount antenna designed for all environments and applications.
- [Calsense Stick Antenna](#) (model GR-STICK-5), is a 5-dBi quad-band fiberglass omnidirectional antenna used to extend the range. LMR-400-DB or LMR-600-DB cable is required if mounting a stick antenna.
- [Calsense Antenna Cable Surge Protector](#) (model ANT-PROT), helps protect a cellular radio antenna from lightning strikes and is required when using a GR-STICK-5 antenna.

### CS3-GR-KIT

The CS3-GR communication option that includes GR-STUBBY antenna. Requires Calsense cellular data plan, purchased separately.

### Cellular Communication Data Plans

Calsense offers 1-year, 5-year, and 10-year prepaid data plans for cellular communication, allowing the use of Calsense devices without a third-party service contract.

- COMM-1YR-2: 1-year plan for 1 modem, supporting 1 or 2 controllers.
- COMM-5YR-2: 5-year plan for 1 modem, supporting 1 or 2 controllers.
- COMM-10YR-2: 10-year plan for 1 modem, supporting 1 or 2 controllers.
- COMM-1YR-4: 1-year plan for 1 modem, supporting 3 or 4 controllers.
- COMM-5YR-4: 5-year plan for 1 modem, supporting 3 or 4 controllers.
- COMM-10YR-4: 10-year plan for 1 modem, supporting 3 or 4 controllers.
- COMM-1YR-35: 1-year plan for 1 modem, supporting 5 to 35 controllers.
- COMM-5YR-35: 5-year plan for 1 modem, supporting 5 to 35 controllers.
- COMM-10YR-35: 10-year plan for 1 modem, supporting 5 to 35 controllers.
- COMM-1YR-36+: 1-year plan for 1 modem, supporting 36 or more controllers.
- COMM-5YR-36+: 5-year plan for 1 modem, supporting 36 or more controllers.



GR-STUBBY Cellular stubby surface-mount antenna with 3-ft. antenna cable

# CS3-GR

cellular communication option

## Cellular Communication Bundles

Calsense offers a variety of bundles that include a 4G LTE modem for the CS3000 to connect to Command Center Online. Each bundle comes with a GRSTUBBY antenna and a 10-year prepaid data plan, designed to support different numbers of controllers.

- CS3-GR-BUNDLE-2: Supports 1 or 2 controllers.
- CS3-GR-BUNDLE-4: Supports 3 or 4 controllers.
- CS3-GR-BUNDLE-35: Supports 5 to 35 controllers.

## Cellular Interface

- 4G LTE: 700/850/AWS1700/1900 MHz
- UMTS/HSPA+: 850/1900 MHz
- GSM/GPRS/EDGE: 850/1900
- Transfer Rates: up to 100 Mbps downlink, up to 50 Mbps uplink

## Environmental

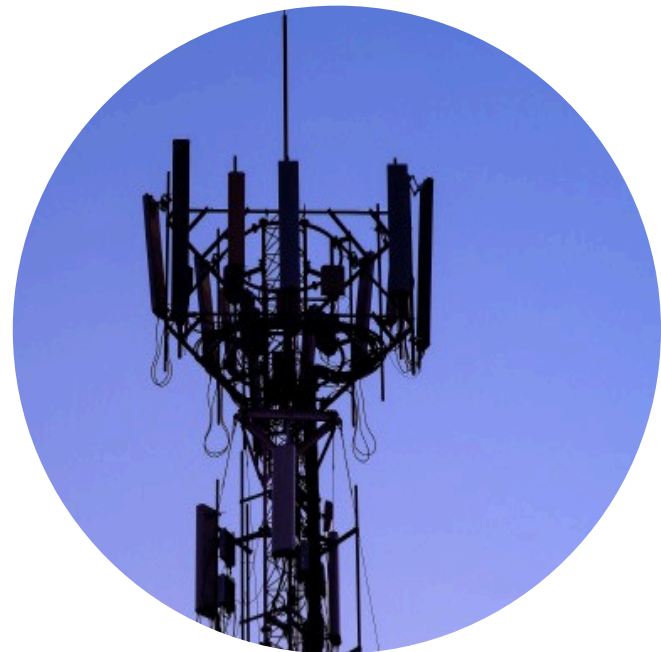
- Operating Temperature: -40° to 85°C (-40° to 185°F)
- Relative Humidity: 20 to 90%, non-condensing

## Certifications

- EMC: FCC Part 15 Class B
- RF: FCC Part 22, 24, and 27
- Safety: UL® 60950-1 2nd Ed.
- Network: PTCRB
- Carrier Approval: AT&T

## Warranty

- 2-year limited warranty



IEEE is a registered trademark of The Institute of Electrical and Electronics Engineers, Inc.

UL is a registered certification mark of UL LLC.

\*All data plans are non-cancellable and non-refundable. If renewing an existing plan, existing phone number required. For new orders, must include customer/job location; renewals must include existing phone number to renew.